

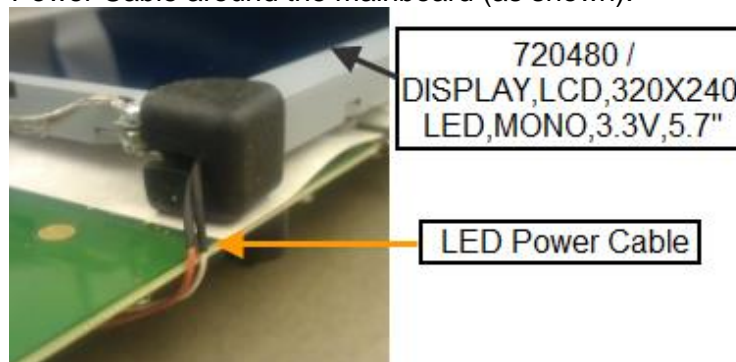
Document Description: CSB-SPOT LXI_LED LCD INSTALL	Document Number: 80021534 Version: B
	
<small>Printed or electronic versions of this document not accessed directly from the designated Welch Allyn Controlled Quality Information System are For Reference Only.</small>	

Customer Service Bulletin


Product:	SPOT LXi 4500 Vital Signs	Date:	2016-06-07
Subject:	720480 / DISPLAY,LCD,320X240,LED,MONO,3.3V,5.7" Installation		
HW Version(s) Affected:	SPOT LXi 4500 / All models	SW Version(s) Affected:	N/A
Serial Numbers Affected:	N/A	Lot or Date Code Affected:	N/A
Classification:	As Needed		
Distribution:	<input checked="" type="checkbox"/> Customer Care <input type="checkbox"/> Product Service <input type="checkbox"/> Field Service <input checked="" type="checkbox"/> ASPs <input checked="" type="checkbox"/> Distributors <input checked="" type="checkbox"/> Customers <input type="checkbox"/> Company Confidential		
Training Required:	<input type="checkbox"/> Yes <input checked="" type="checkbox"/> No		

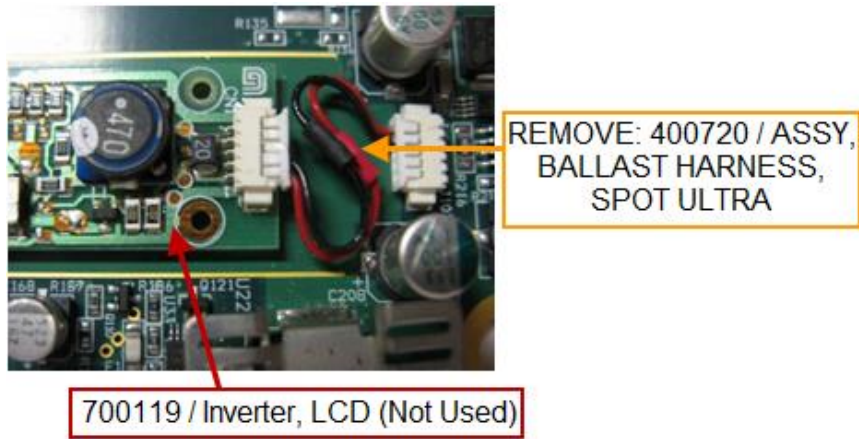
Summary: The LED LCD display (720480) has replaced the CCFL display (703354). With the installation of the LED LCD display, the LCD inverter (700119), and ballast harness assembly (400720) are no longer used.
Note: 720480 / DISPLAY,LCD,320X240,LED,MONO,3.3V,5.7" was introduced into production on June 18, 2014.

Route the LED Power Cable around the mainboard (as shown):

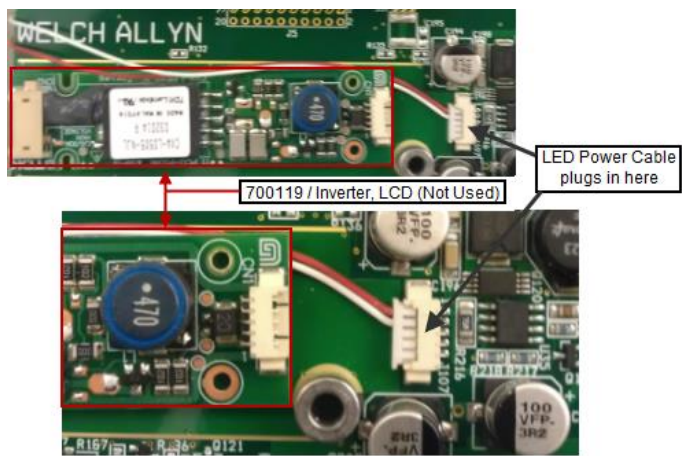


When replacing a CCFL display (703354) with an LED LCD (720480), remove the Ballast Harness assembly (p/n: 400720) from connector J107 and from the inverter board.

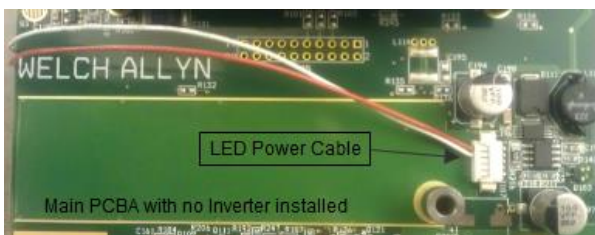
Document Description: CSB-SPOT LXI_LED LCD INSTALL	Document Number: 80021534 Version: B
	
Printed or electronic versions of this document not accessed directly from the designated Welch Allyn Controlled Quality Information System are For Reference Only.	



By-pass the inverter board with the LED Power Cable and plug it directly into connector J107 (as shown).




When replacing the LCD in a device that was manufactured after June 2014, there will be no inverter board installed. The LED Power Cable will plug directly into connector J107 (as shown).



Version	Sec, Pg,	Change Made	Date	Version
---------	----------	-------------	------	---------

THIS INFORMATION IS THE PROPERTY OF WELCH ALLYN, INC. AND AS SUCH SHALL NOT BE REPRODUCED, COPIED, OR USED AS A BASIS FOR THE MANUFACTURE OR SALE OF EQUIPMENT OR DEVICES WITHOUT THE EXPRESS WRITTEN PERMISSION OF WELCH ALLYN, INC.				
FCD-1482 Rev K		Parent: WI-17206803		2

Document Description: CSB-SPOT LXI_LED LCD INSTALL	Document Number: 80021534 Version: B
	
Printed or electronic versions of this document not accessed directly from the designated Welch Allyn Controlled Quality Information System are For Reference Only.	

	Para Changed		Created	Created By (initials)
A	N/A	Initial Release	2016-05-18	SMB
B	N/A	Removed DRAFT from document title / watermark	2016-06-07	SMB

THIS INFORMATION IS THE PROPERTY OF WELCH ALLYN, INC. AND AS SUCH SHALL NOT BE REPRODUCED, COPIED, OR USED AS A BASIS FOR THE MANUFACTURE OR SALE OF EQUIPMENT OR DEVICES WITHOUT THE EXPRESS WRITTEN PERMISSION OF WELCH ALLYN, INC.